



+ luminaria +
restaurant & patio

+ luminaria +
restaurant & patio

05.01.19

Project Team:

Alexander Dzurec: Principal in Charge

Lawrence Ortiz: Project Manager

Ahmed Zaki: Architectural Designer

Prepared by:

autotroph
architecture.planning.sustainable design consulting

www.autotrophdesign.com

505-216-7555

Prepared for:


HERITAGE
HOTELS & RESORTS, INC

© 2019 Autotroph Inc.

All original design work in this document is the Property of Autotroph Inc. All rights reserved.

Project Site – a Hidden Gem of Santa Fe



Project site: Restaurant Patio @ the Inn at Loretto



Site view from Water & Old Santa Fe Trail



Site Approach

Patio Views



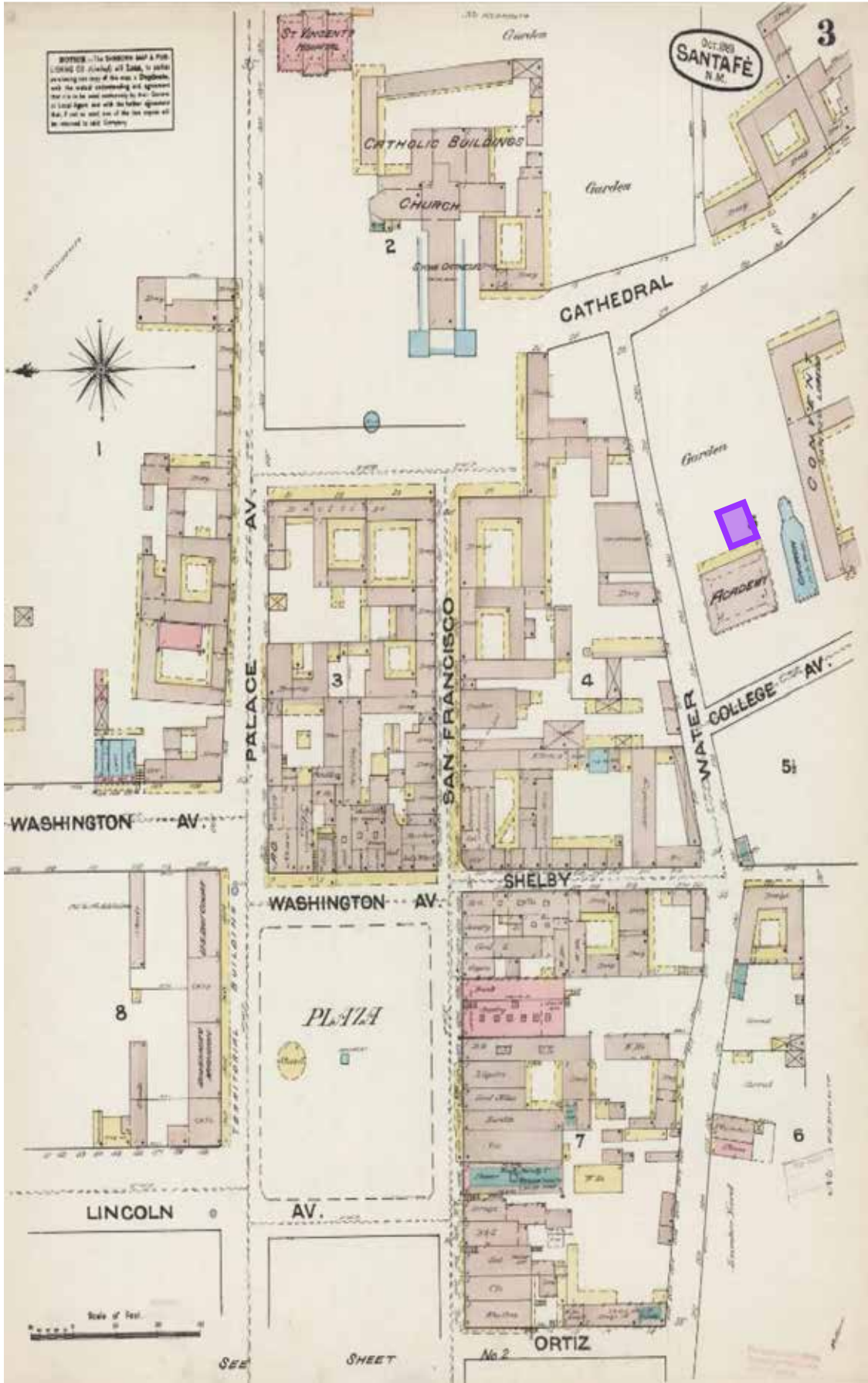
Existing Conditions: Patio



Existing Conditions: Boiler Room Walls



History of the Site



Loretto Academy

Loretto Chapel

Loretto Convent



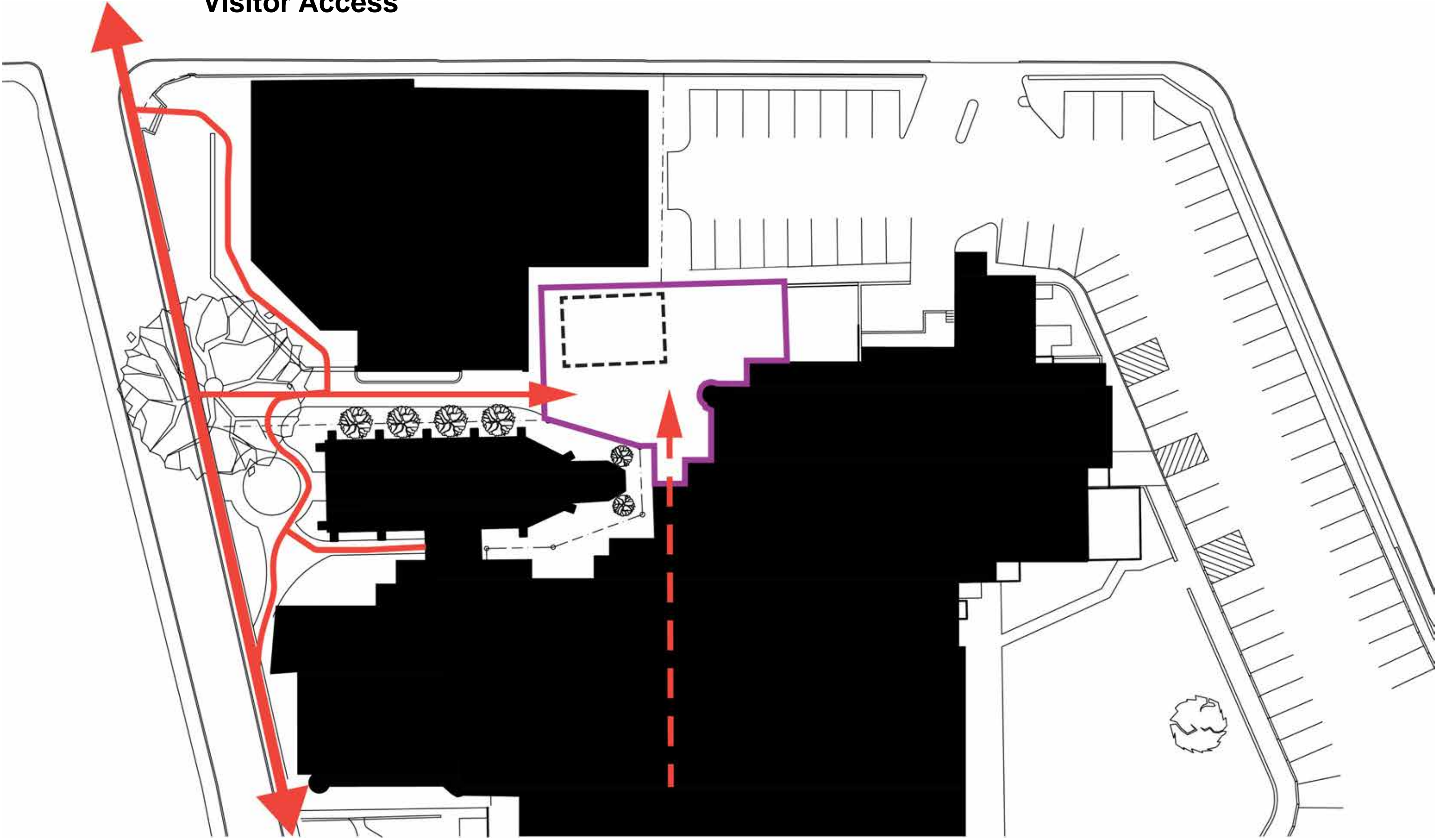
Loretto Academy Ca. 1883

Approx. location of Boiler Room overlaid on Historic Survey

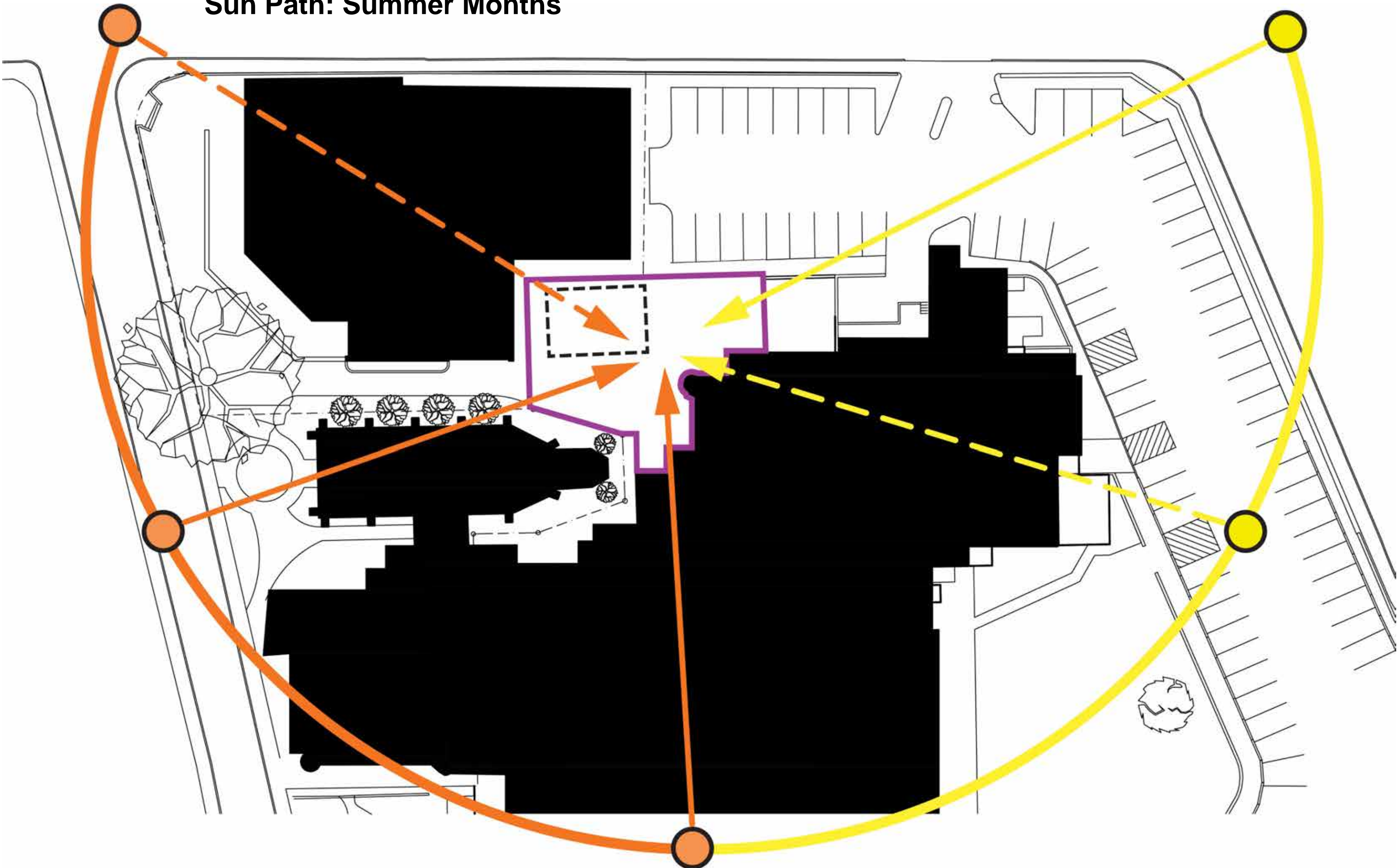
Project Site



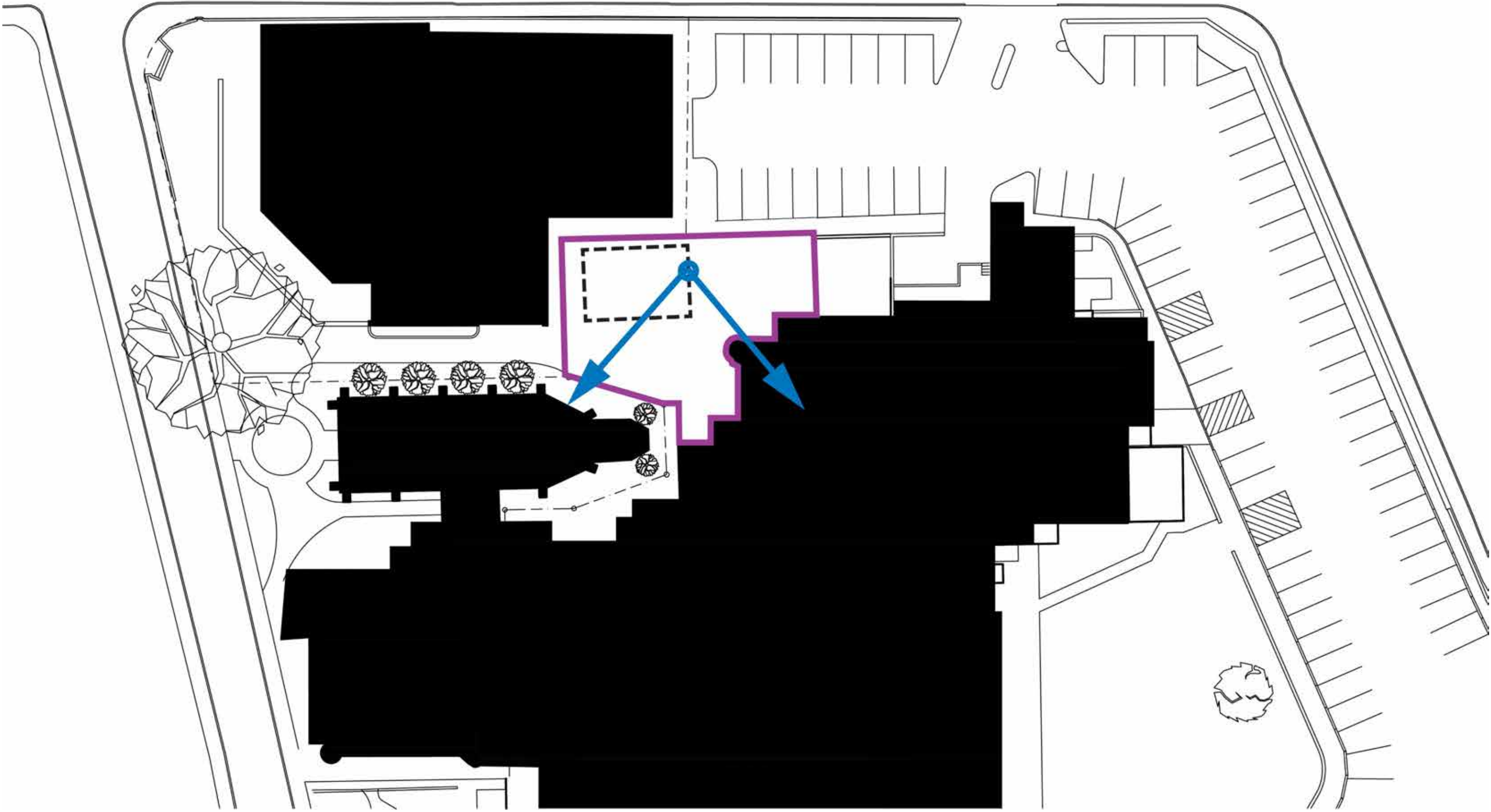
Visitor Access



Sun Path: Summer Months



Primary Views



Parti



Key

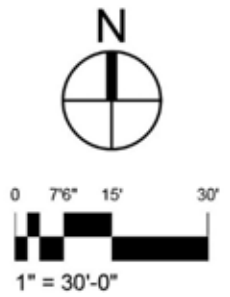
-  Wall Enclosure
-  Shade
-  Vegetation
-  Water Feature
-  Fire Feature

Site Plan



Key

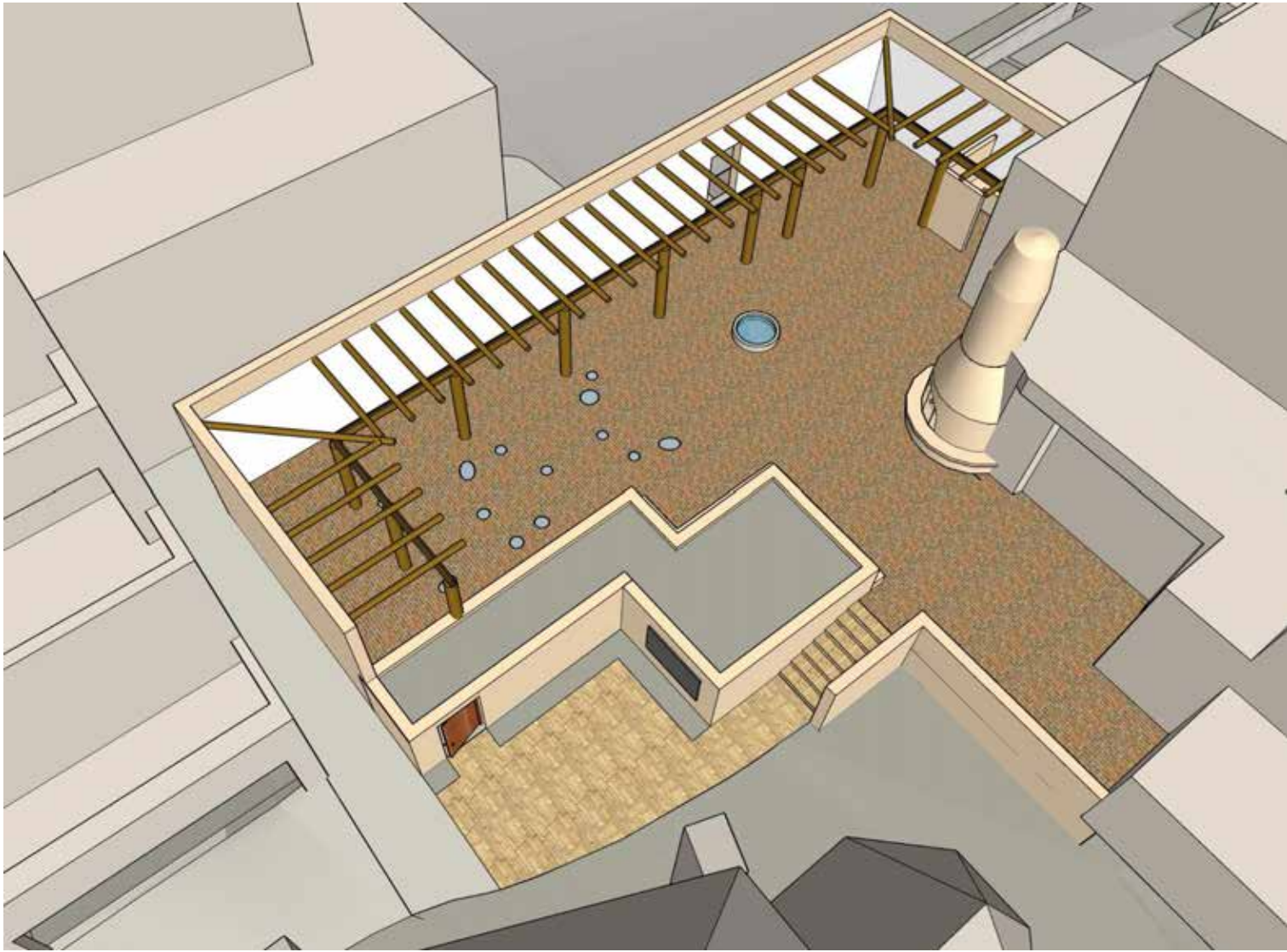
- 1. Inn at Loretto
- 2. Loretto Chapel
- 3. Future Mixed Use Building
- 4. Patio
- 5. Parking



Patio Elements



New enclosure wall and patio. Oculi provide glimpse to Boiler Room below.



New portal constructed along enclosure wall provides shade and frames views to Loretto Chapel & the hotel.

Furnished Patio



Furnishings and landscaping will create an exceptional Courtyard Patio.

Solar Studies



June 21 – 9:30 AM



June 21 – 12:00 PM



June 21 – 4:30 PM



October 15 – 10:00 AM



October 15 – 12:00 PM



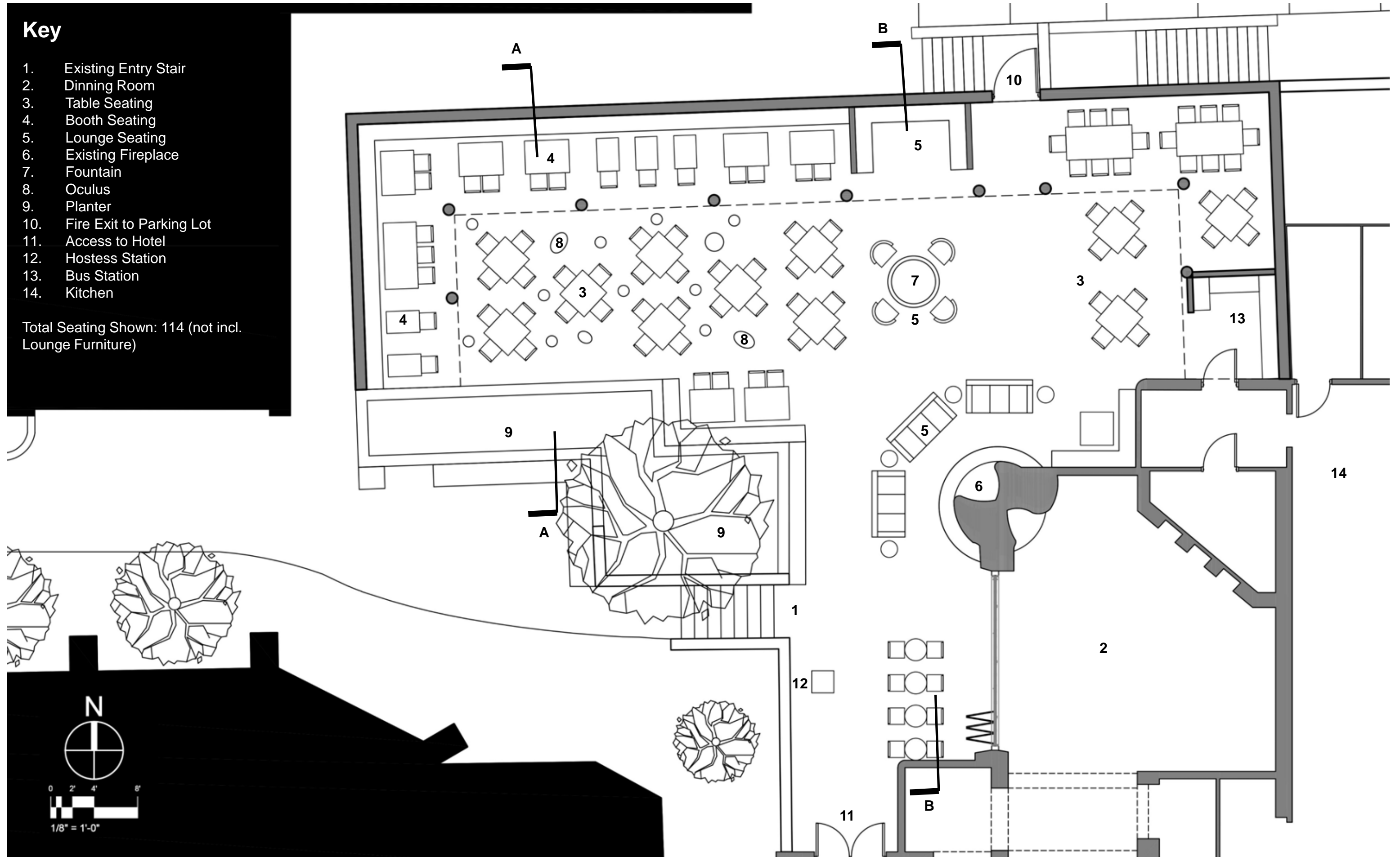
October 15 – 3:30 PM

Patio Plan

Key

1. Existing Entry Stair
2. Dining Room
3. Table Seating
4. Booth Seating
5. Lounge Seating
6. Existing Fireplace
7. Fountain
8. Oculus
9. Planter
10. Fire Exit to Parking Lot
11. Access to Hotel
12. Hostess Station
13. Bus Station
14. Kitchen

Total Seating Shown: 114 (not incl. Lounge Furniture)



Patio Approach



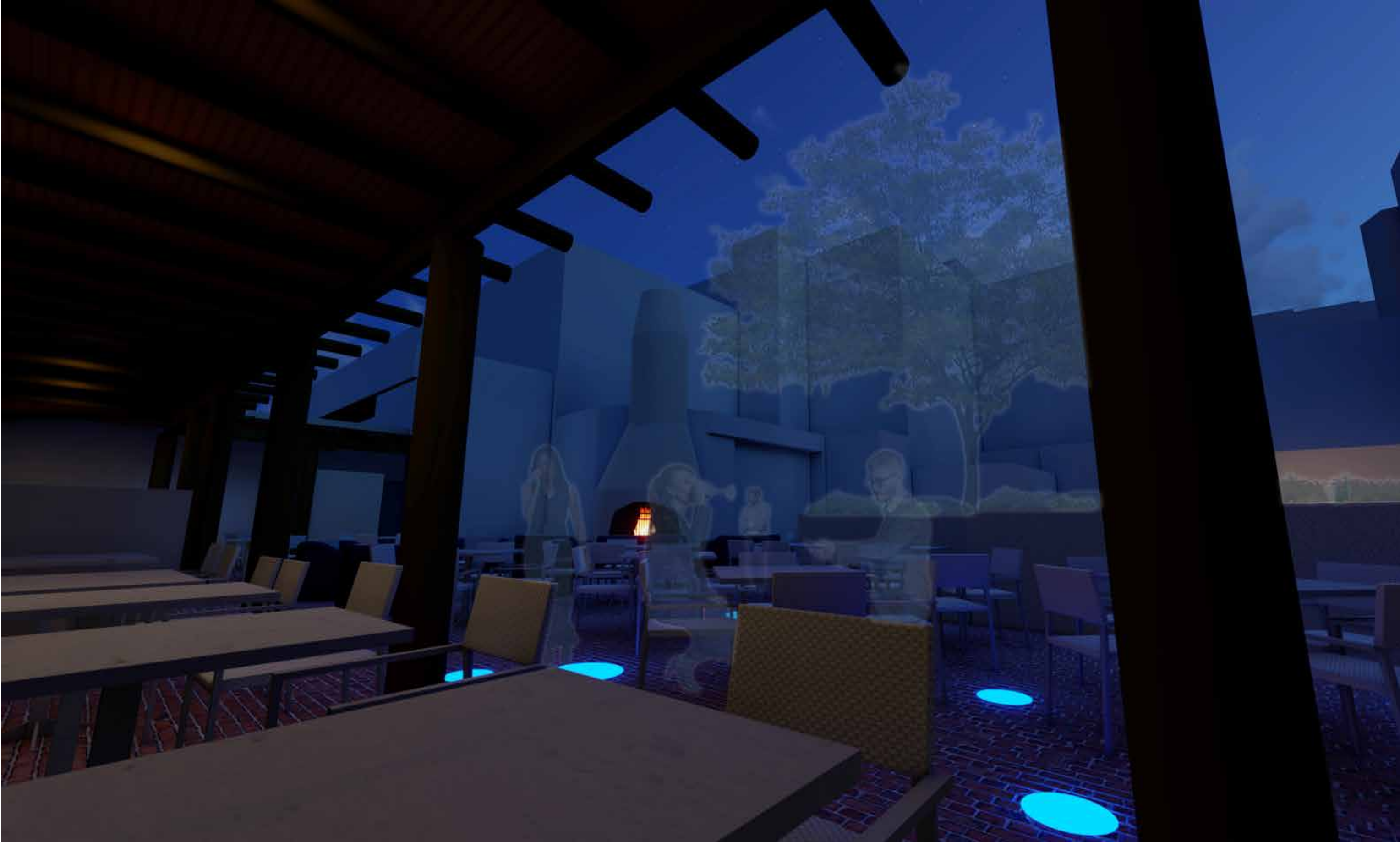
Patio View



Patio View



Patio View



Patio Views



A Discreet Door



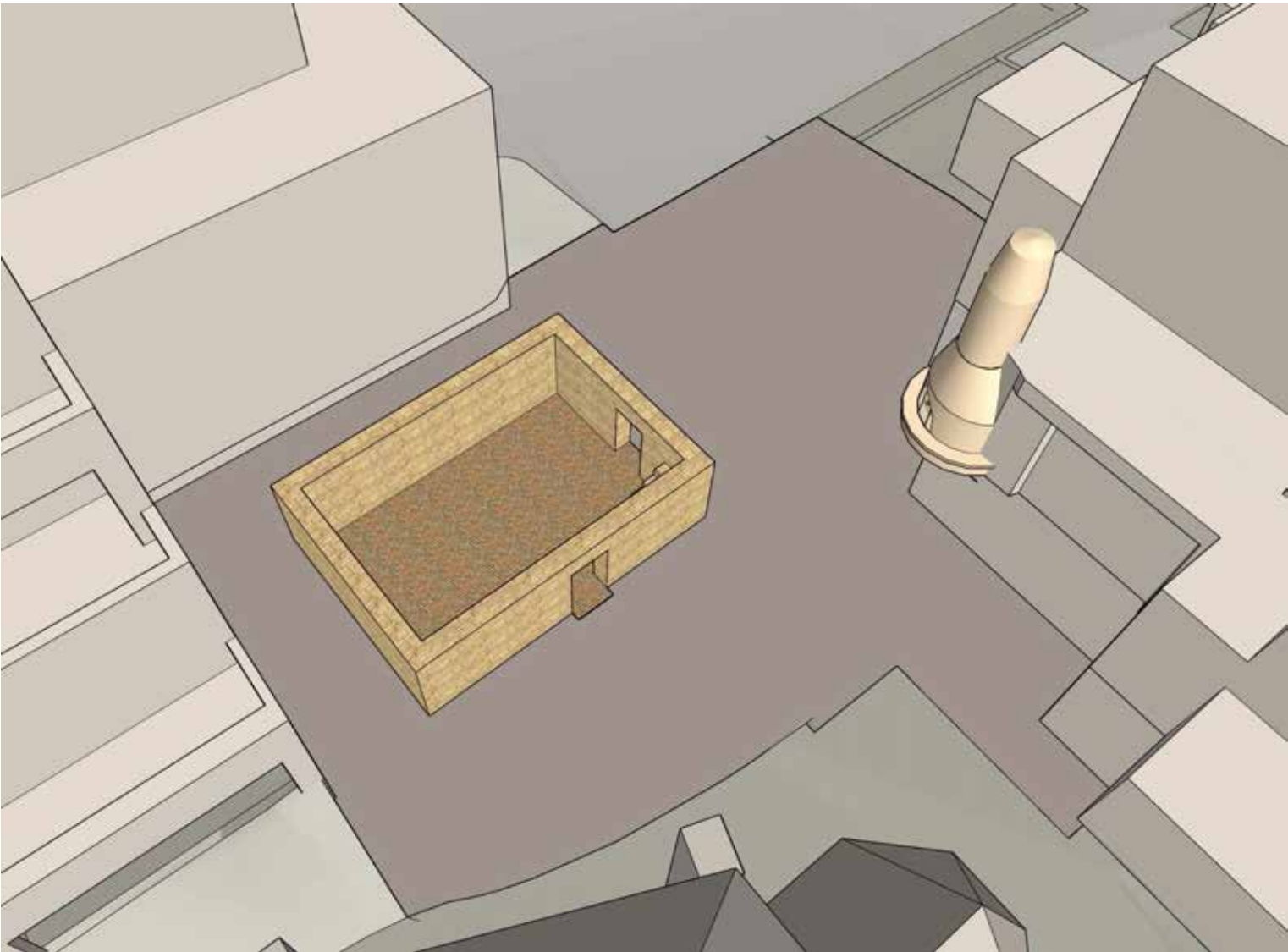
Speakeasy



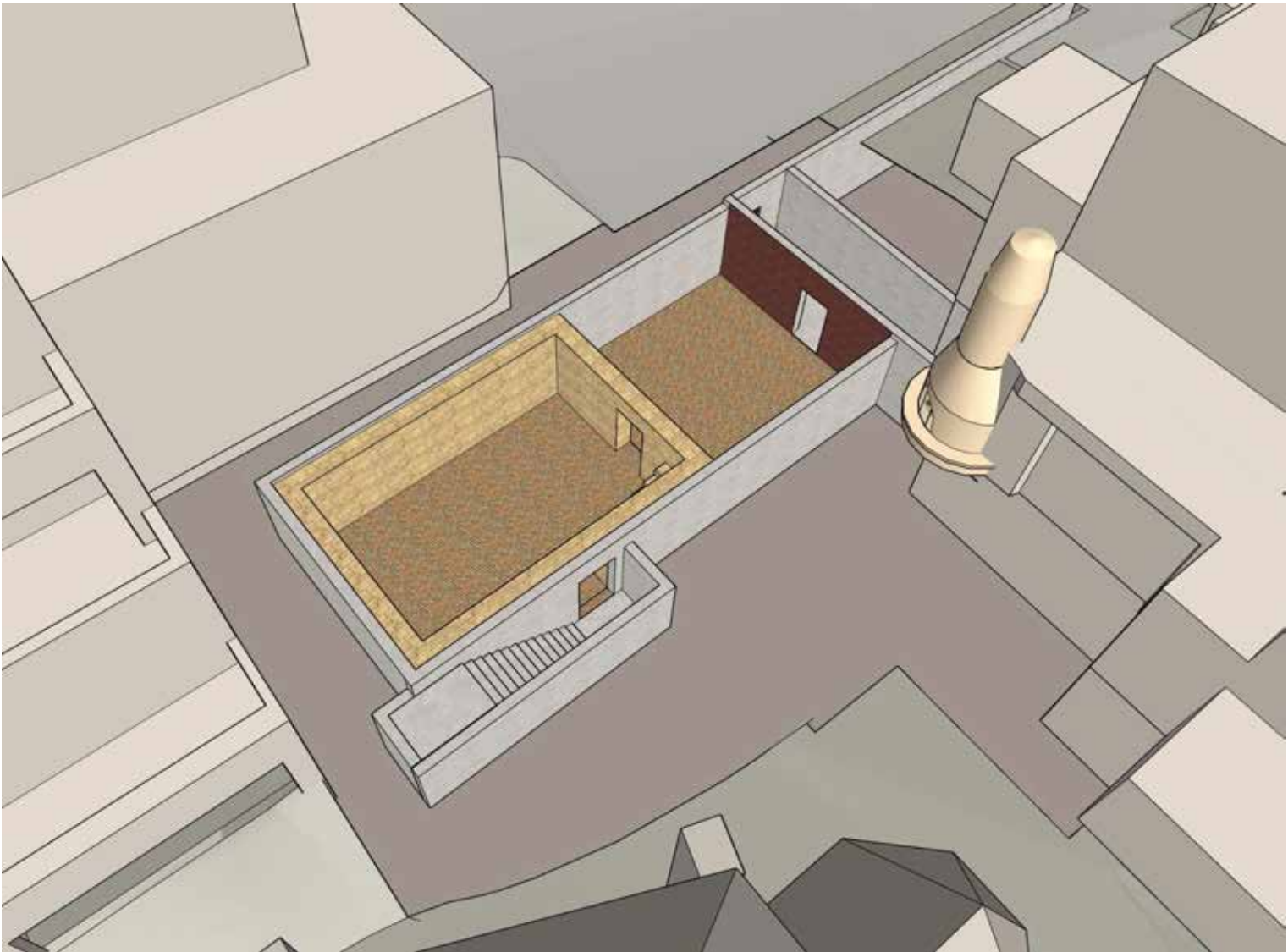
Speakeasy



Speakeasy Elements

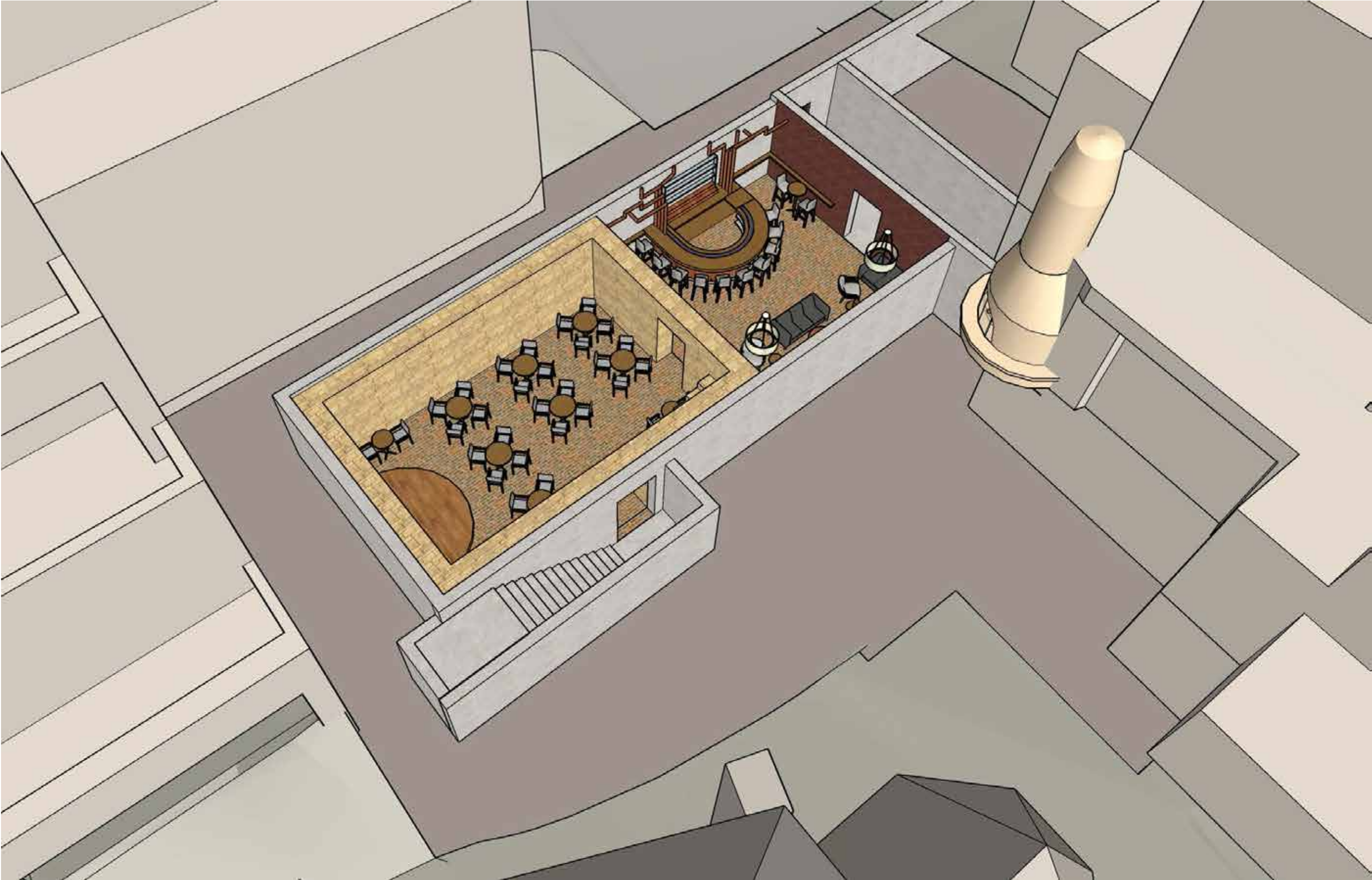


The Boiler Room walls are rehabilitated, new doorways are inserted



Retaining walls are added and a new subterranean space is constructed to connect to existing Hotel basement.

Furnished Speakeasy



The Boiler Room is an intimate performance space and a bar is located in the new subterranean room to create a speakeasy. This will be one of Santa Fe's top nightlife spots.

Section A-A

Thru Performance Space / Entry

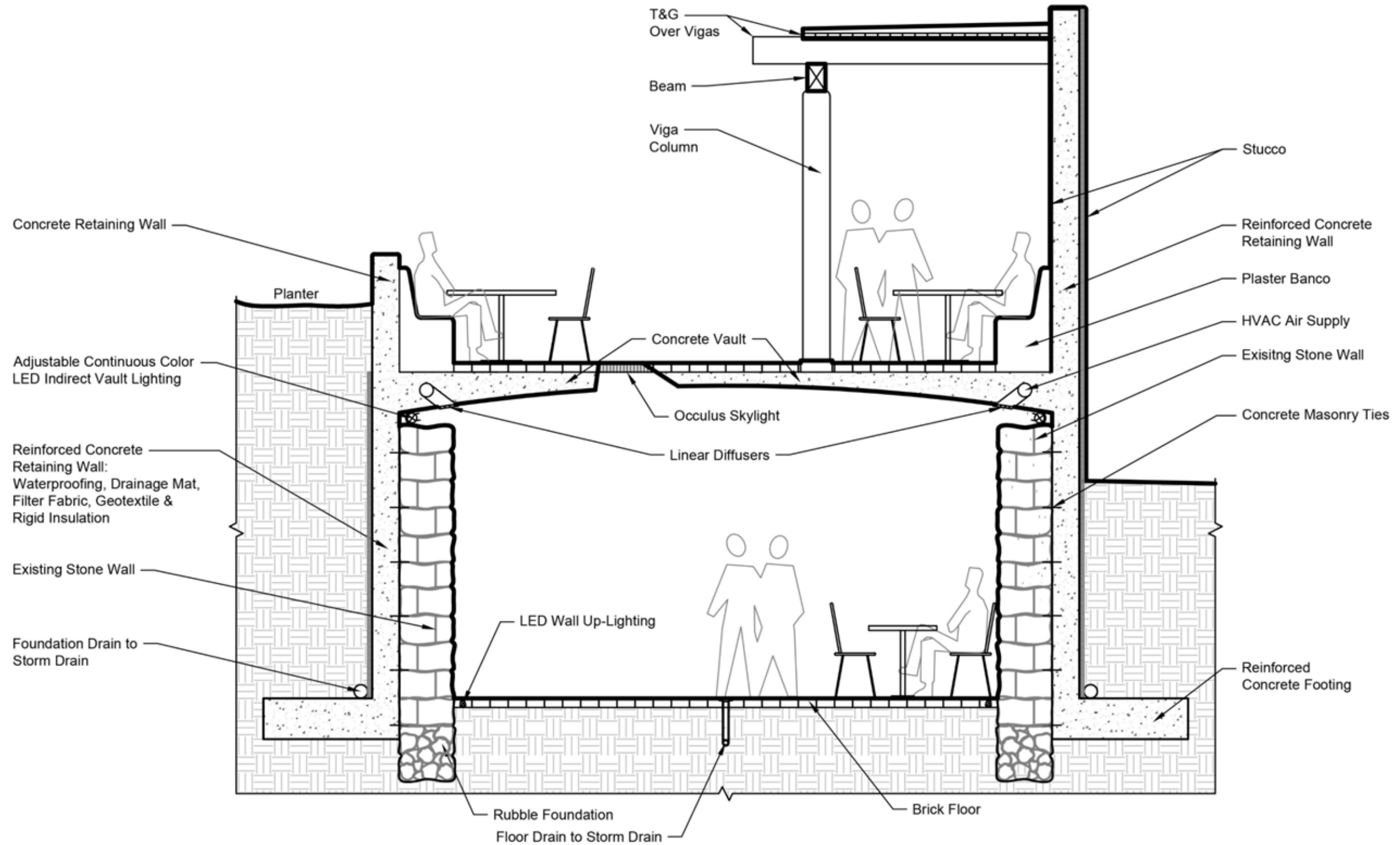


Section B-B

Thru Bar & Patio



Construction Section

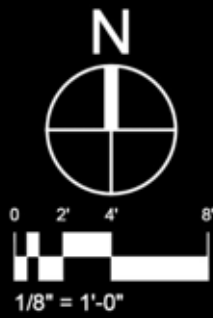
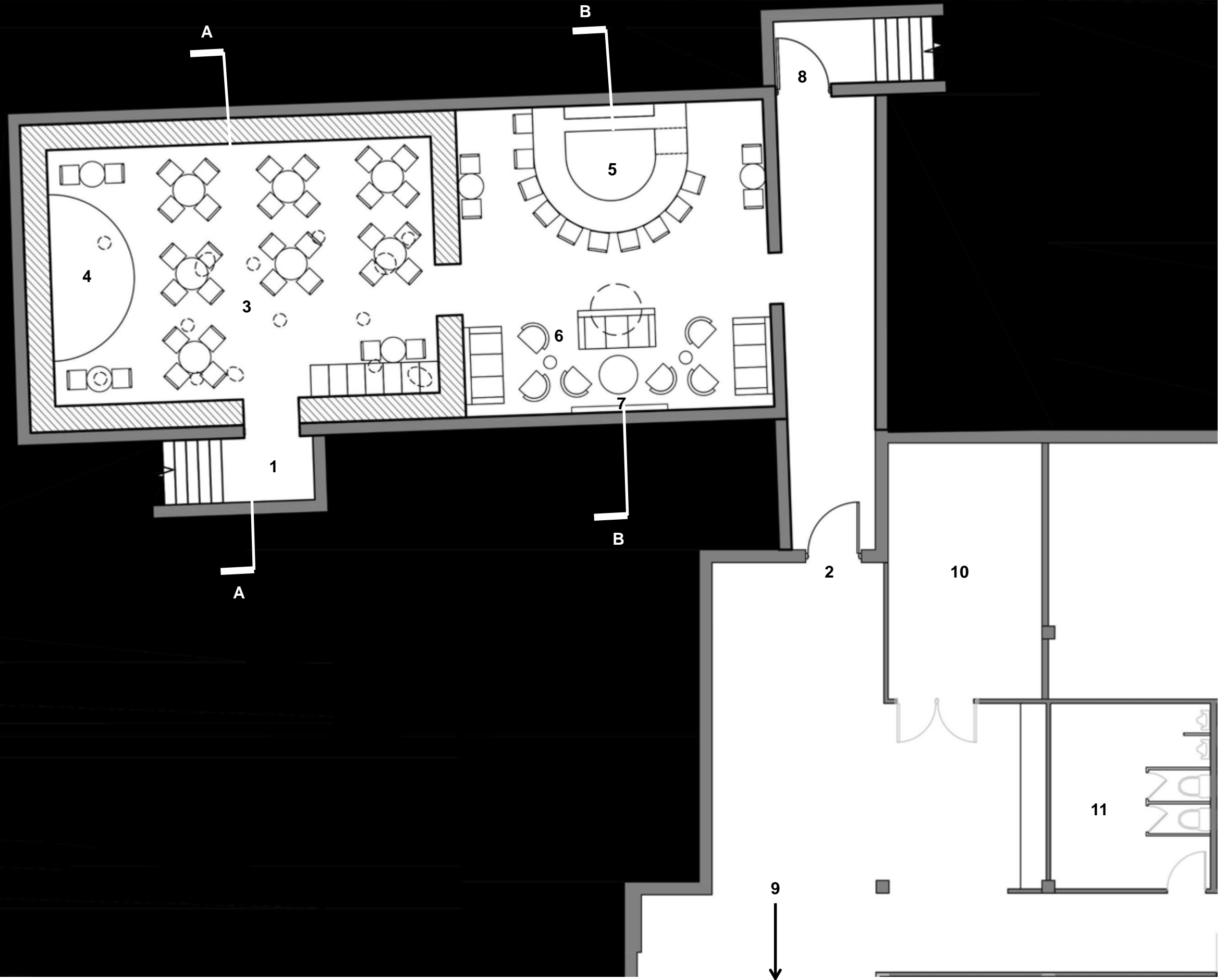


Speakeasy Floor Plan

Key

1. Entry from Exterior
2. Entry from Hotel Basement
3. Performance Space (Former Boiler Rm)
4. Stage
5. Bar
6. Lounge Seating
7. Fire Feature
8. Fire Exit to Parking Lot
9. To existing elevator and exit Stair.
10. Bar Storage (reconfigured from existing)
11. Existing Restrooms

Performance Space Capacity:
34 Seated; 100 Standing









www.autotrophdesign.com

505.216.7555

222 E. Marcy St.
Santa Fe, NM 87501